

Wayfarer/CL16 Regatta 2023

SUPPLEMENTAL SAILING INSTRUCTIONS (SSIs)

Refer to RRS Appendix S for Standard Sailing Instructions

The notation '[NP]' in a rule of the sailing instructions (SIs) means that a boat may not protest another boat for breaking that rule. This changes RRS 60.1(a).

1 COMMUNICATIONS WITH COMPETITORS

- 1.1 Notices to competitors will be posted on the official notice board located at Mississauga Sailing Club (MSC), inside on the lower level of the clubhouse.
- 1.2 The race office is located at MSC clubhouse.

2 SIGNALS MADE ASHORE

- 2.1 Signals made ashore will be displayed on the flag pole on the roof of the MSC clubhouse.
- 2.2 When flag AP is displayed ashore, '1 minute' is replaced with 'not less than 30 minutes' in Race Signals AP.

3 SCHEDULE OF RACES

3.1

Number	Races per day Scheduled	Races per day Maximum
Seven (7)	Saturday 22 July, Four (4) Sunday 23 July, Three (3)	Four (4)

- 3.2 (a) The scheduled time of the warning signal for the first race on Saturday is 1100.

(b) The scheduled time of the warning signal for the first race on Sunday is 1000.
- 3.3 No warning signal will be made after 1300 on Sunday 23 July, 2023.

4 COURSES

- 4.1 The course will either be Triangle/Winward-Leeward or Windward Leeward as diagrams attached.
- 4.2 The Race Officer will display numeral flag 1 prior to the start if Windward-Leeward course is to be used

5 MARKS

- 5.1 Marks 1 and 2 shall be yellow or orange tetrahedron
- 5.2 New marks will be yellow cylindrical marks.

6 THE START

- 6.1 A boat that does not start within five (5) minutes after her starting signal will be scored Did Not Start without a hearing. This changes RRS A5.1 and A5.2.

7 TIME LIMITS

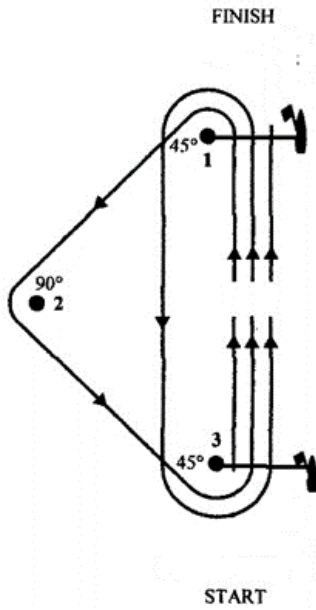
- 7.1 Mark 1 time limit will be twenty (20) minutes for the first boat to pass Mark 1.
- 7.2 Race Time limit for the first boat to sail the course and finish will be sixty (60) minutes
- 7.3 Finishing Window Time Limit will be twenty (20) minutes after the first boat sails the course and finishes.

8 SAFETY REGULATIONS

- 8.1 A boat that retires from a race shall notify the race committee at the first reasonable opportunity.
- 8.2 All competitors will be required to sign out on the notice board prior to leaving the dock and back in again within 15 minutes of returning to the dock.
- 8.3 All competitors will wear a PFD at all times during racing.

A Triangle-Windward-Leeward Course

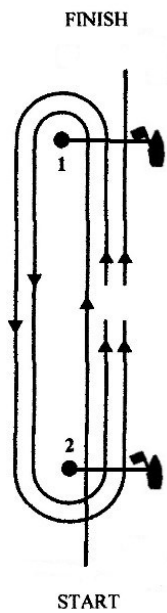
Start – 1 – 2 – 3 – 1 – 3 – Finish



MSC uses the leeward and windward marks as starting and finishing marks.

B Windward-Leeward Course

Start – 1 – 2 – 1 – 2 – Finish



(MSC uses the leeward and windward marks as starting and finishing marks)

Fly a number 1 Pennant if using this course

